



USER MANUAL

HOW TO USE THE GENERAL OPTIONS

V.1.5.0

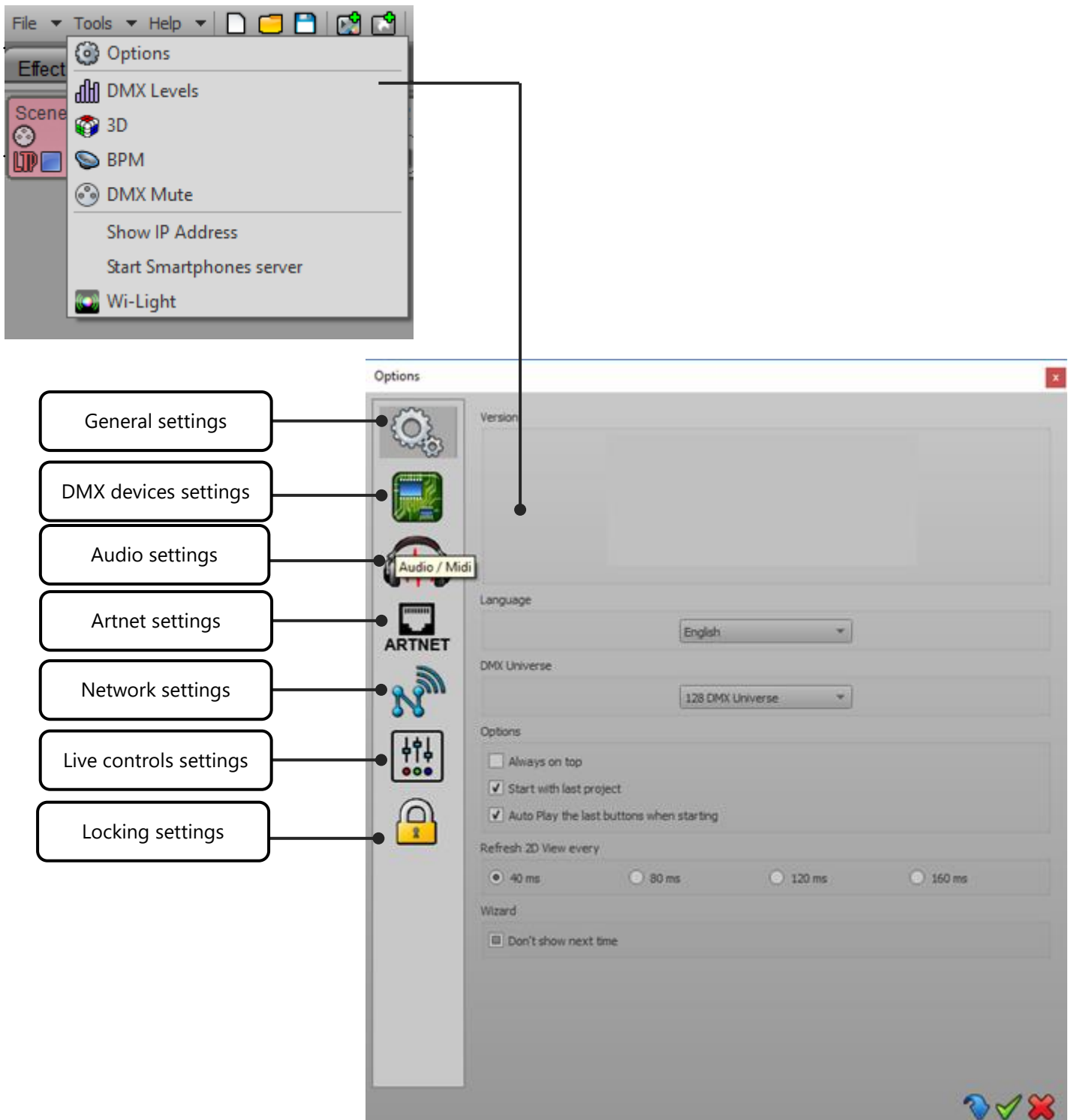
SUMMARY

Introduction	3
Option window	3
General options.....	4
Devices options.....	5
Audio options.....	6
Add BPM mode to Scenes and Programs	7
Artnet options	8
Network options.....	9
Commands options	10
Lock settings.....	11

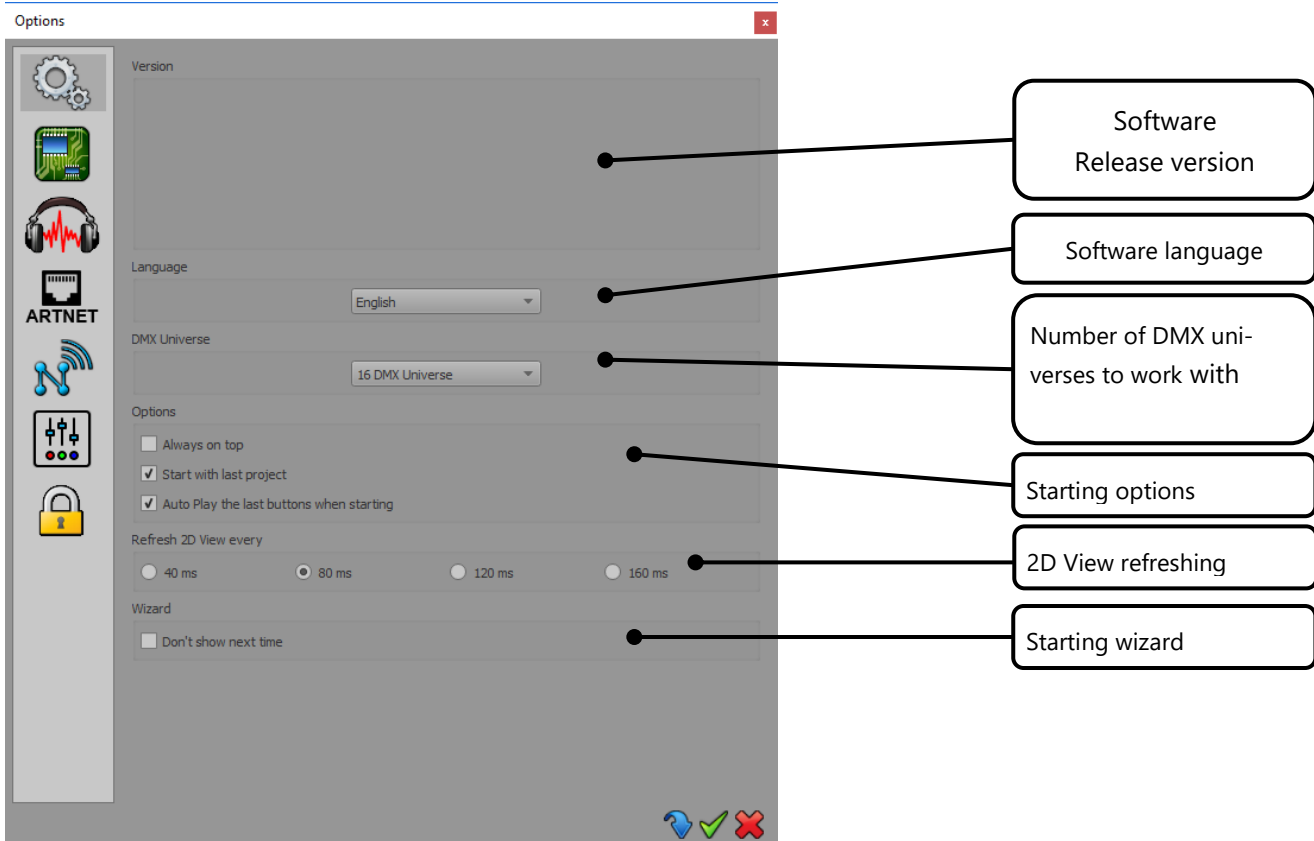
INTRODUCTION

This chapter presents the Advanced Options. They will allow you to configure the software as you wished. The main advanced options are in the tool menu of the software.

OPTION WINDOW



GENERAL OPTIONS



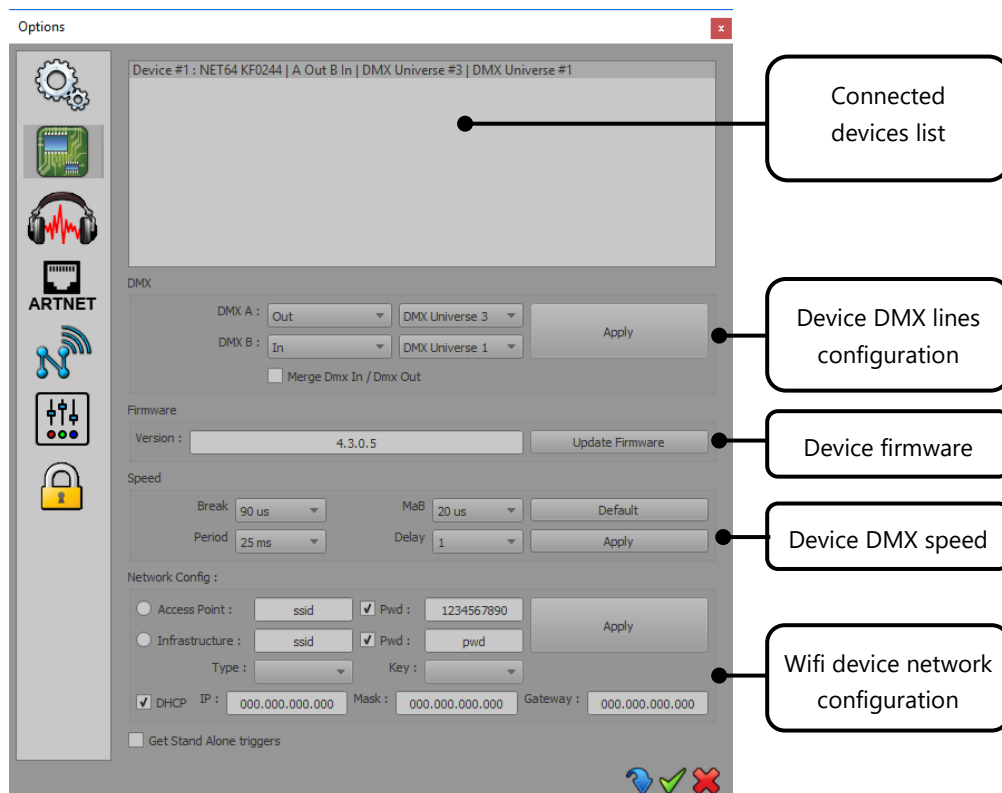
- **DMX Universe:** The software can manage up to 128 universes. To increase the software performances select here only the number of DMX universes that you need. when change the number of universe you will have to restart the software to apply the new changes.
- **Note :** If you open a show with more universes than the software already have, you will have to restart the software to adjust automatically the number of universes.

Starting options:

- **Always on top:** Keep the software in the foreground.
- **Start with last project:** Will automatically load the last project you were working on. This is a default option.
- **Auto play last buttons:** Will call back and play buttons that where playing at the previous software closure.
- **Refresh 2D view every:** Give several timing to regulate the software rendering. Pick the higher value for the best performances.
- **Wizard, don't show next time:** Don't show anymore the splash wizard upcoming when you start the software.

DEVICES OPTIONS

This page manage the electronics cards connected to your computer. It shows the list of connected interfaces to the different USB ports of your computer. They are ordered by serial number going from the lowest to the highest serial number. The list contains devices names, DMX configurations and DMX universes assignments.



DMX: Configure the XLR DMX lines of the Device. For each lines (DMX A – DMX B) you can:

- Define the communication mode: In or Out (depending on if the interface allows it or not)
- Assign a DMX universe. For example with 2 lines defined as 2 Outputs you can set the same universe on the 2 XLR and use your hardware like a DMX Splitter.
- Or choose to merge the input signal with the output signal.

Click on the Apply button to confirm the new configuration.

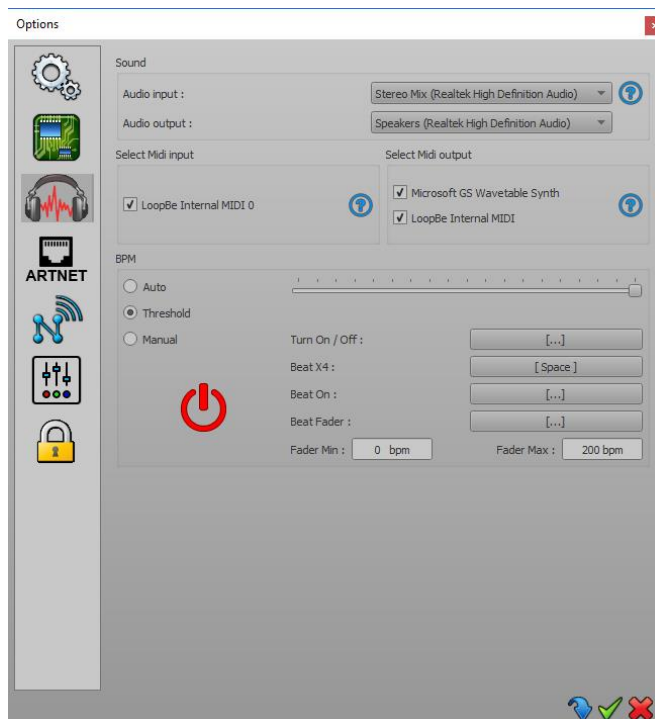
Firmware: Firmware version of the selected device. The update option will automatically update the Firmware of the selected interface if a new firmware is available. The process takes a few second and you must never disconnect your device during the updating process or the interface will be damaged. You will have to restart your interface and software at the end of the firmware update process.

Speed: 4 values are available to configure the DMX signal parameters which will affect the speed of the DMX signal. Click Apply to confirm the speed and observe the result on the pilot LED of the interface. Speed settings are important if some of your lightings equipment are incompatible. Lowering the speed may solve the problem but in our experience, the problem usually comes from a cable, a connection or a fixture.

Wifi: Configure the wifi device to choose if it will work in "Access Point" mode to generate it's own wifi network (default mode after reset) or if it will work in "Infrastructure" mode to connect the interface to a local network and to control it from the same network.

AUDIO OPTIONS

The software offer options to adjust triggers scene on an audio source.



By default the software is connected to your microphone. The best configuration for BPM is to connect the audio output on « Stereo Mix ». The « Stereo Mix » output option shall not be available immediately. Follow the instructions described in the « Help Tab » to access the Stereo Mix Output options.

Sound :

- **Audio Input:** Select one of the available audio input for the beat detection. If you play music from the computer, you must select your audio device as audio input. To do this please check the local Help by clicking the help button right to the audio input selector.
- **Audio Output:** Select one of the available audio output to play the software sounds (Timeline)

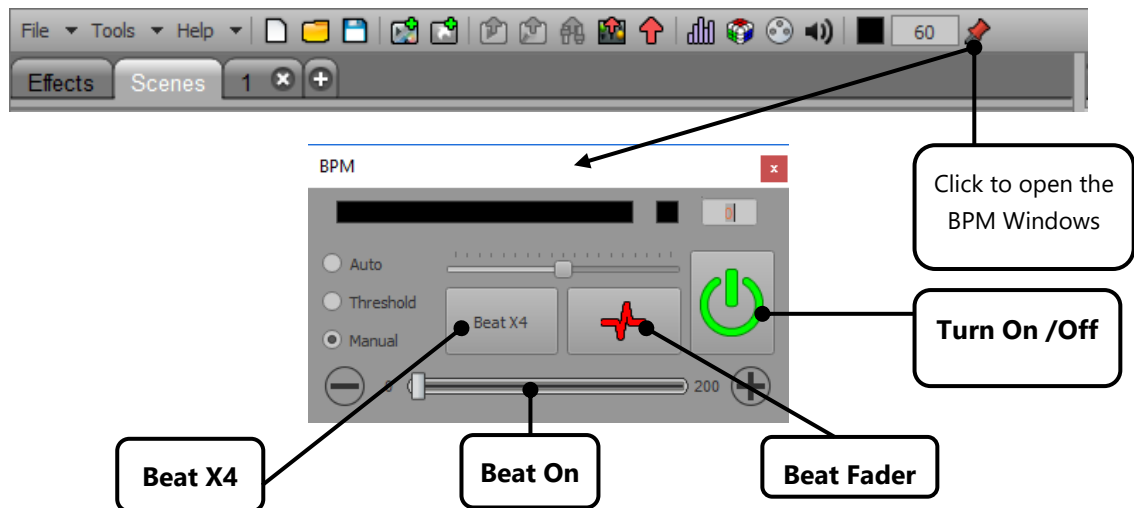
MIDI: Select a MIDI Input or Output to send or receipt midi notes and midi control commands.

BPM

- **Sound Level:** Adjust sound level to get analysed.
- **Auto:** Auto detection algorithm.
- **Threshold:** Auto detection algorithm with adjustable sound threshold (Move the red cursor in the sound meter to adjust the beat detection threshold).
- **Manual:** Define manually the tone frequency .

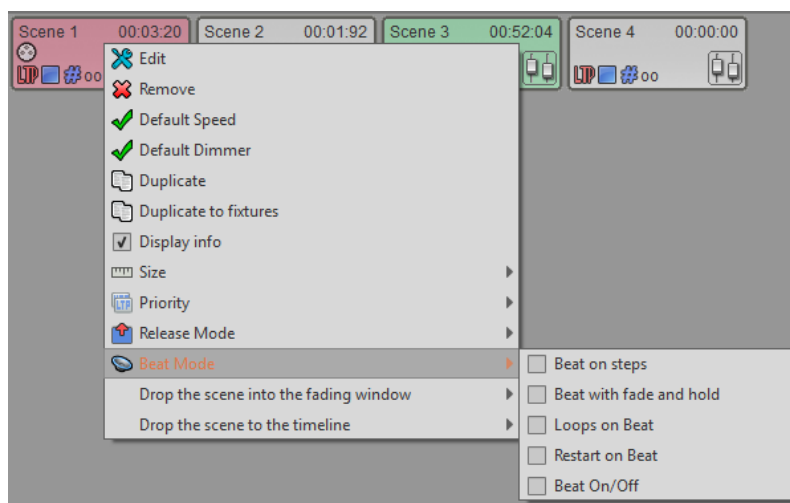
Triggers :

- **Turn On /Off:** Turn On or Off the BPM mode.
- **Beat X4:** Define by clicking 4 time the Bpm average.
- **Beat On:** Define the BPM by clicking.
- **Beat Fader:** Define the BPM range.



ADD BPM MODE TO SCENES AND PROGRAMS

Right click on a scene button to display the different Beat mode choices and activate the scene in the right BEAT mode.



Beat on steps : The scene steps play on each beat and pause between each beat, you play your scene on the music rhythm.

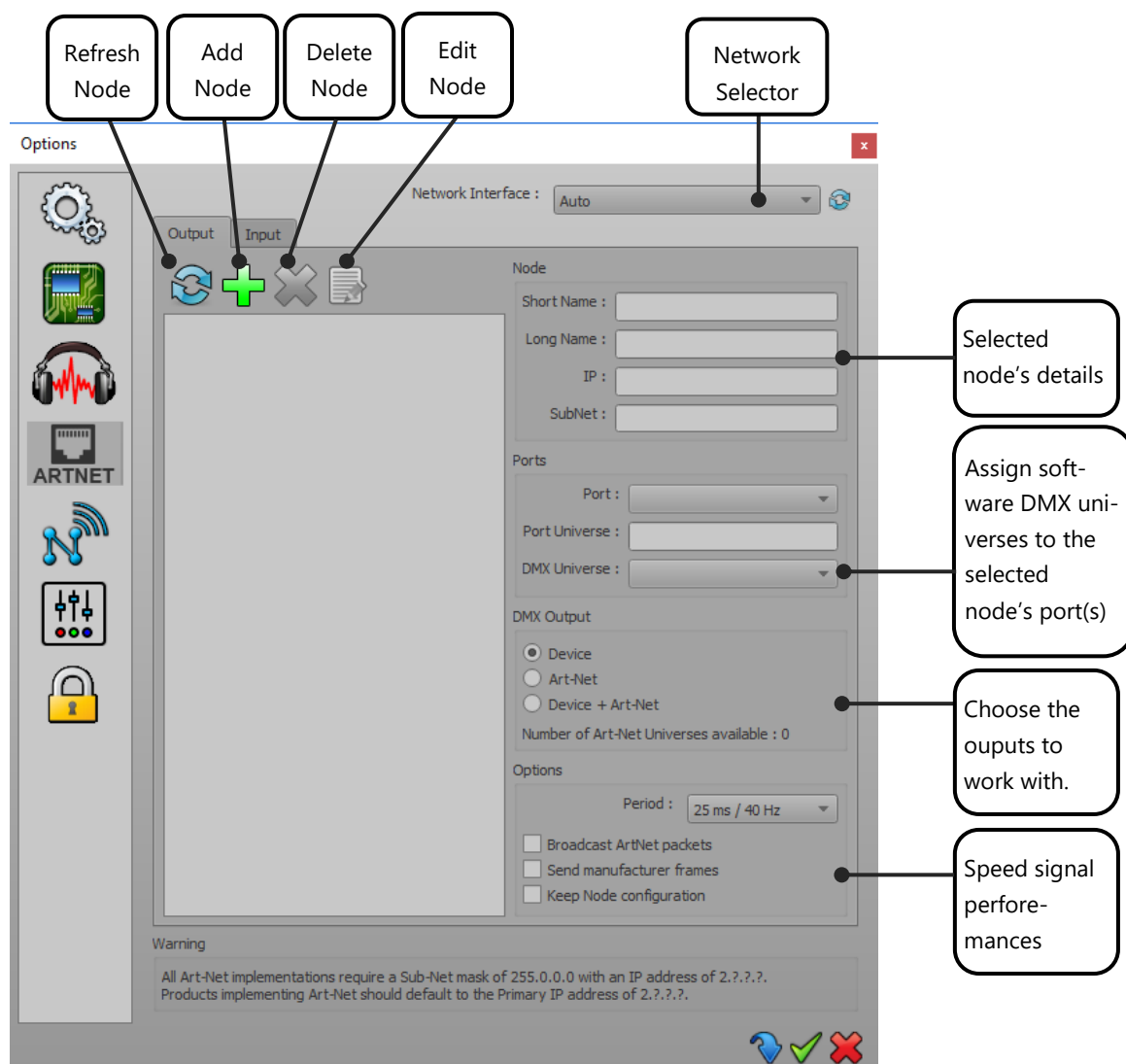
Beat with fade and hold : The scene steps play on each beat considering the fading and holding time between each beat.

Loops on Beat : At the first beat, the scene steps are completely played considering its steps and fading and holding time of each steps.

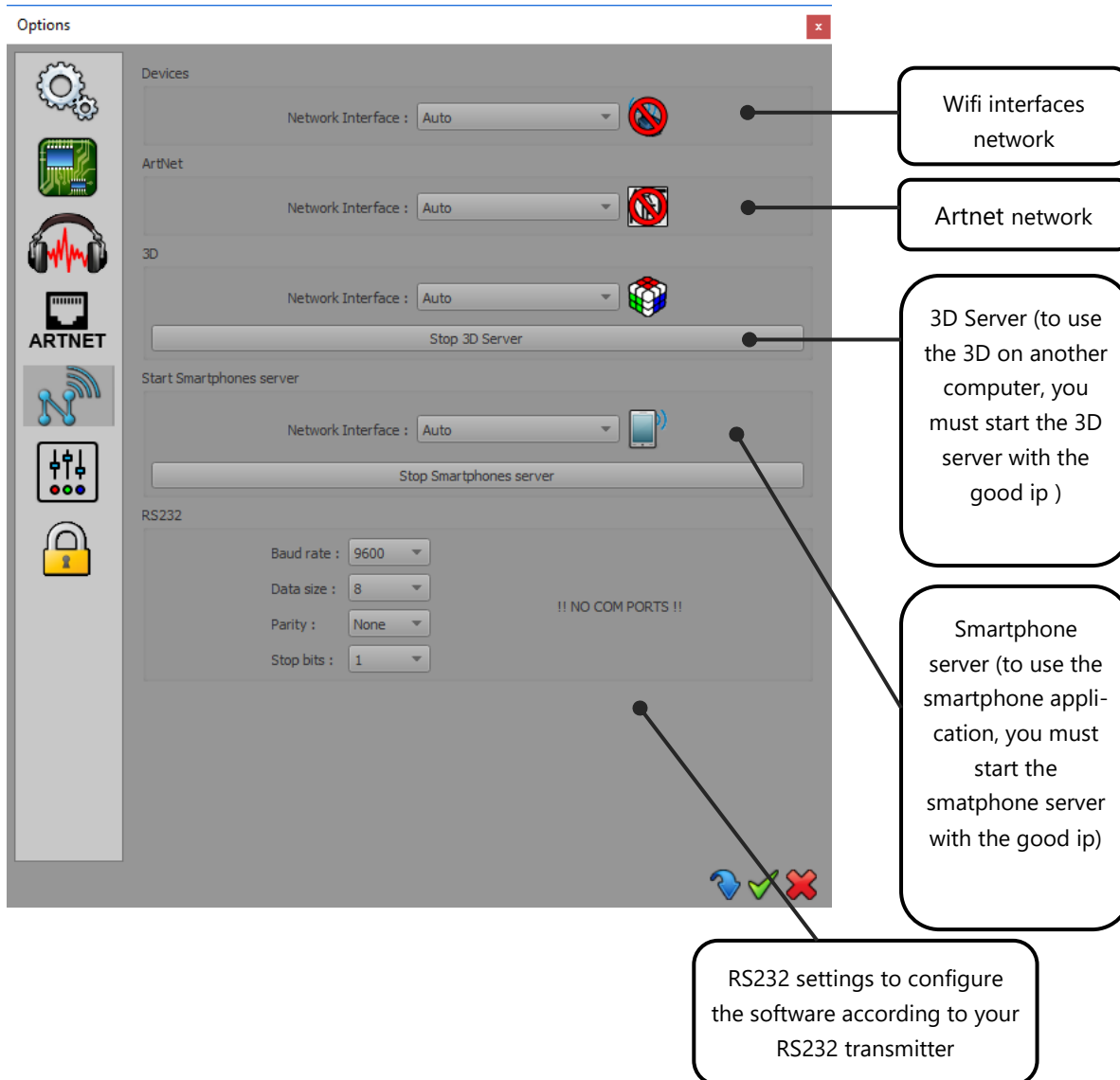
You must wait the end of the loop to play again the scene on the next beat.

Restart on Beat : The scene restart to the 1st step on each beat.

Beat On/Off : The scene is started and stopped on each beat (On/Off effect).



NETWORK OPTIONS



Device:

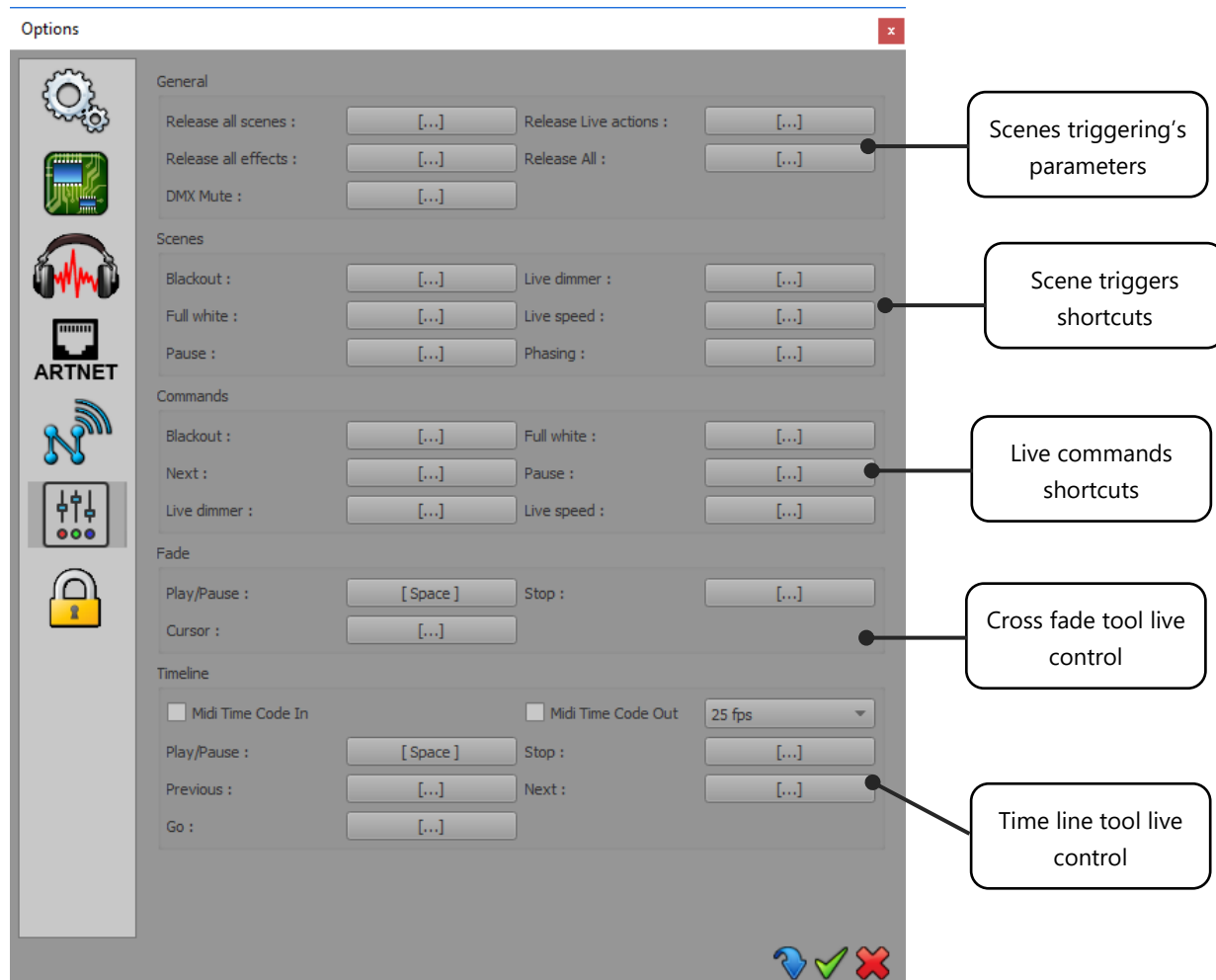
The software allows to communicate with our wifi interfaces. By default, the program selects a network interface most of the time, you do not have to worry about that part. However, if your computer has multiple network adapters, or if for some reason or another, the software chooses a bad network interface, you can force the use of the interface of your choice by selecting the manual option. In all cases, if a connection problem occurs, the icon will indicate this by a prohibited direction and flash in the toolbar.

Artnet:

Similarly, you can select the network interface in charge of the ArtNet part. If you select a network interface manually, the software will prompt you in this case that interfaces with an IP address starting with 2.

Computer's adequate IP address should be assigned before using the software in this case.

COMMANDS OPTIONS



Same as the scenes, effects, groups or tabs, the software allows you to assign commands (keyboard shortcut, MIDI control, DMX and Artnet In, button interfaces, remote or dry contact) to the various functions of the software. All possibilities are listed in this page. The only limit is on sliders like the speeds or dimmers which can only be controlled with MIDI control or DMX and Artnet In.

LOCK SETTINGS

You can secure and lock the software with a password to restricting different access. Each main part of the software can be locked or not.

